

Photo Guides to Plants of Southern Africa and Southern Morocco



Presented by:
Thomas Hillmann

Thomas Hillmann^{1,2}; Norbert Jürgens^{1,3}; Manfred Finckh^{1,4}; Gerhard Muche^{1,5}

¹Biodiversity, Evolution and Ecology of Plants, Biocentre Klein Flottbek and Botanical Garden, University of Hamburg, Ohnhorststr. 18, 22609 Hamburg, Germany, ² thomas.hillmann@botanik.uni-hamburg.de; ³ nobert.juergens@t-online.de; ⁴ mfinckh@botanik.uni-hamburg.de; ⁵ gerhard.mucho@botanik.uni-hamburg.de

Introduction

Introduction: African plants have evolved a diversity of forms, functions and habitats. Due to the limited number of print publications, the identification of correct species names is still a large problem, especially when large numbers of specimen need to be identified with a limited investment of manpower and time.

For this aim we developed regional online photo guides for southern Africa and southern Morocco in the frame of the BIOTA AFRICA initiative. These guides present plant photographs in a phylogenetic order thus allowing rapid visual comparison.

Institutional cooperation: The photo guide to southern African plants already received contributions from the National Botanical Research Institute of Namibia (NBRI), the BioCentre Klein Flottbek of the University of Hamburg, and botanists from Namibia and South Africa.



Search by family
Step 1: Please select at least one family

- Acanthaceae (290)
- Aizoaceae (1974)
- Alismataceae (0)
- Alliaceae (12)
- Amaranthaceae (196)
- Amaryllidaceae (109)
- Anacardiaceae (92)
- Annonaceae (0)
- Anthericaceae (17)
- Anthocerotaceae (0)
- Fabroniaceae (0)
- Fissidentaceae (0)
- Flacourtiaceae (0)
- Frankeniaceae (0)
- Fumariaceae (0)
- Funariaceae (0)
- Gentianaceae (4)
- Geraniaceae (303)
- Gigaspermaceae (0)
- Gisekiaceae (10)
- Penaeaceae (0)
- Phytolaccaceae (3)
- Plantaginaceae (0)
- Plumbaginaceae (26)
- Poaceae (919)
- Podocarpaceae (0)
- Podostemaceae (0)
- Polygalaceae (12)
- Polygonaceae (7)
- Pontederiaceae (0)

(number of photos in brackets)
 Only species with photos

Start search uncheck all selected families

Search by family
Search parameters
Selected families: Aizoaceae, 229 Entries
Search results: only species with photos

family: AIZOACEAE

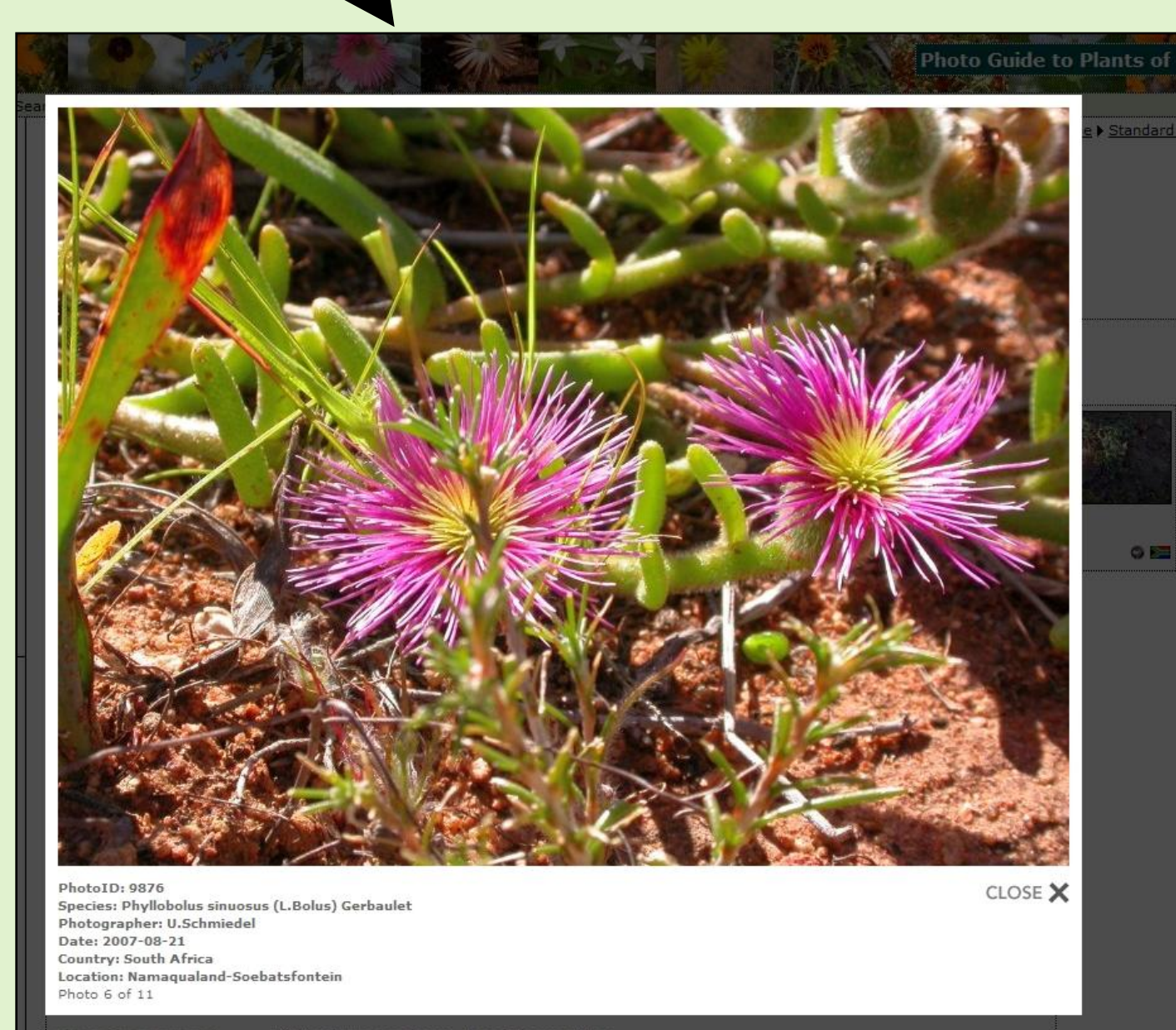
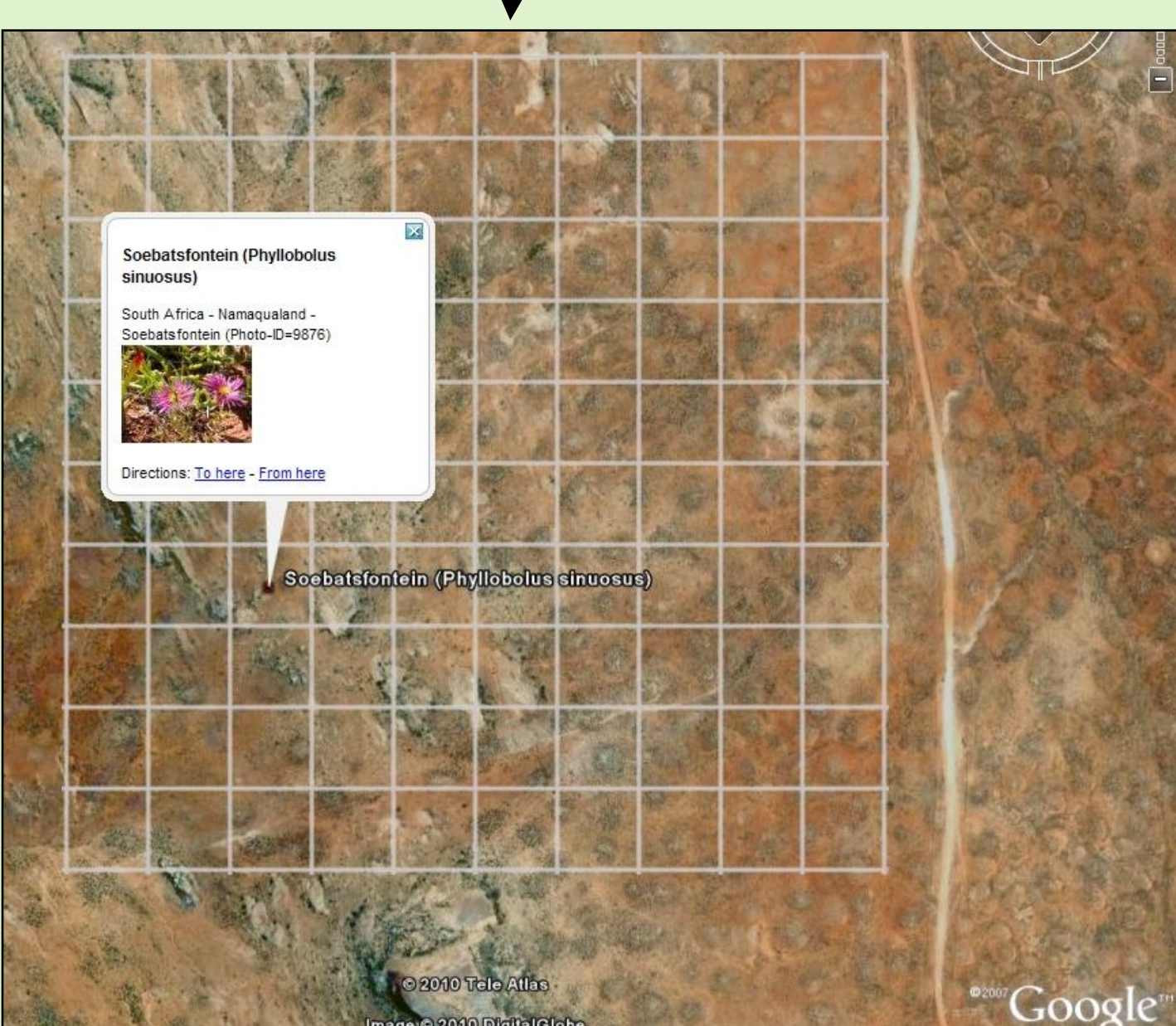
- [family AIZOACEAE] *Aizoanthemum difrac* (Schinz) Friedrich (ID=135)
- [family AIZOACEAE] *Aizoanthemum galenioides* (Fenzl ex Sonder) Friedrich (ID=136) + 8 photos more available
- [family AIZOACEAE] *Phyllobolus sinuosus* (L.Bolus) Gerbaulet (ID=4947) + 8 photos more available
- [family AIZOACEAE] *Phyllobolus spinuliferus* (Haw.) Gerbaulet (ID=4948) + 17 photos more available
- [family AIZOACEAE] *Phyllobolus trichotomus* (Thunb.) Gerbaulet (ID=4953)
- [family AIZOACEAE] *Polymita albiflora* (L.Bolus) L.Bolus (ID=5055)
- [family AIZOACEAE] *Prenia pallens* (Aiton) N.E.Br. (ID=5079) + 6 photos more available

Phyllobolus sinuosus (L.Bolus) Gerbaulet
Family: AIZOACEAE
Genus: Phyllobolus
Species: Phyllobolus sinuosus
Scientific name: Phyllobolus sinuosus (L.Bolus) Gerbaulet
Life form: Geophyte
Life cycle duration: perennial
Mean plant height: 100 mm

< back to Family - preselection

Check for more information in Google Earth
For 11 photos Longitude/Latitude information is available. You can view the locations in Google Earth by clicking the link below!
[see locations of all 11 photos in Google Earth](#)

Check for more information on the species
[West African Plants](#) West African Plants - A Photo Guide
[African Plants Initiative](#) Digitized type specimens, descriptions and use
[IPNI](#) International Plant Names Index



Outlook

We cordially invite botanically skilled photographers, botanists and interested institutions to contribute to the photo guides, in order to make species information available to African stakeholders for education, planning and conservation purposes.